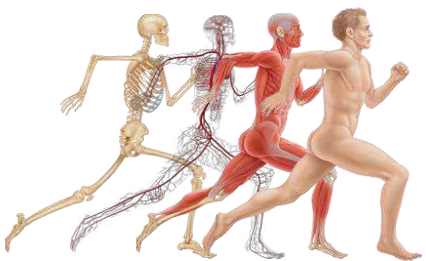


Oral Maxillofacial Surgical (OMF) Bone Defects

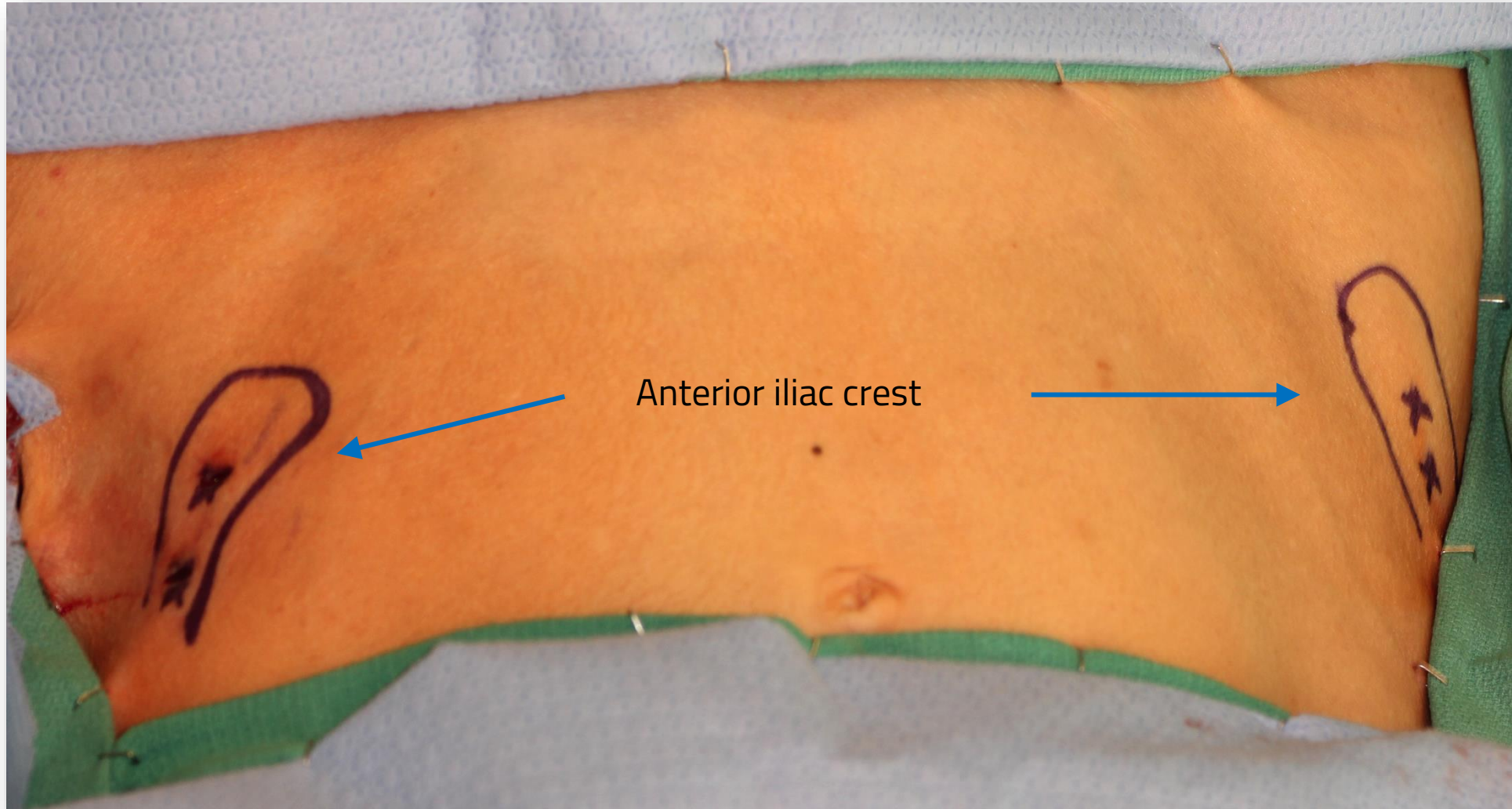
Prof. Dr. Robert Marx
Chief of Oral Maxillofacial Surgery
University of Miami, FL/USA



Oral Maxillofacial Surgical (OMF) Mandibular Bone Defect

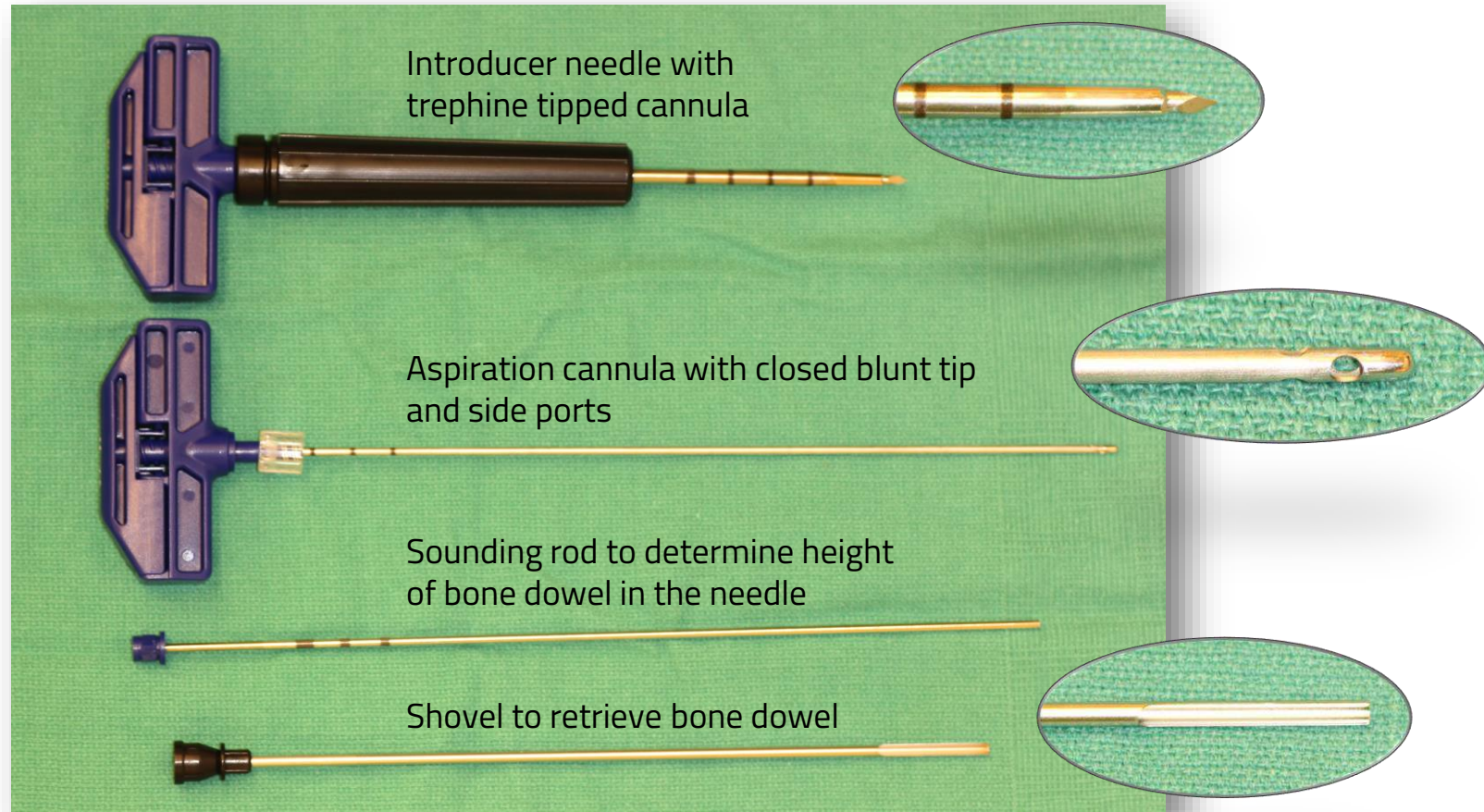


Anterior Iliac Crest Anatomical Puncture Zones



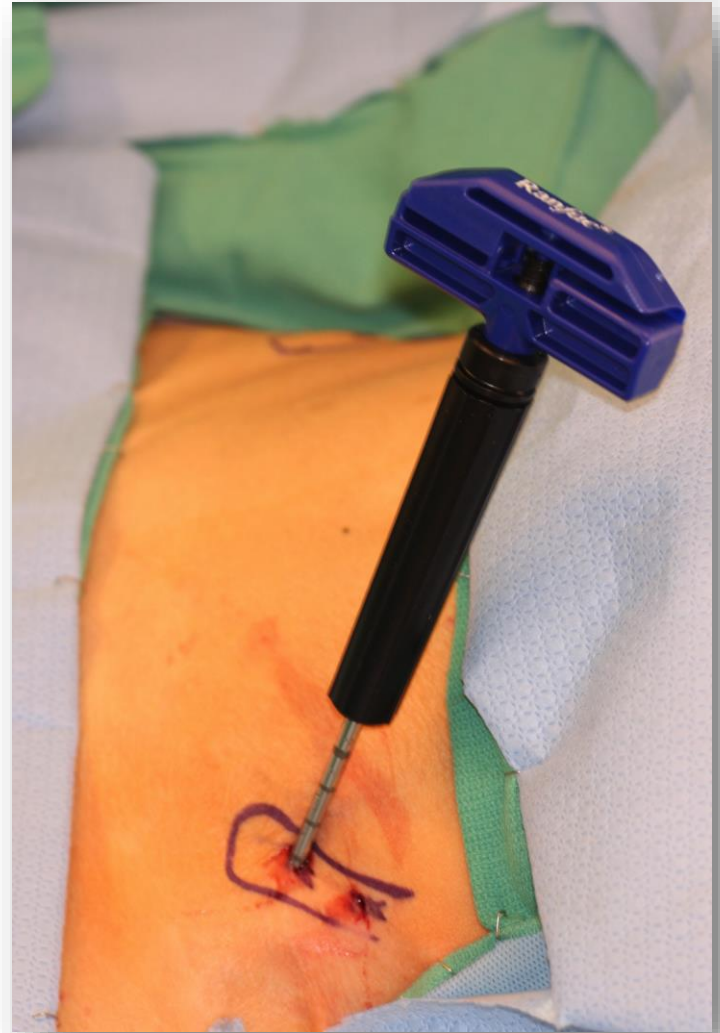
MC-RAN-8: Marrow Cellution™

Bone Marrow Aspirate & Autologous Bone Graft System



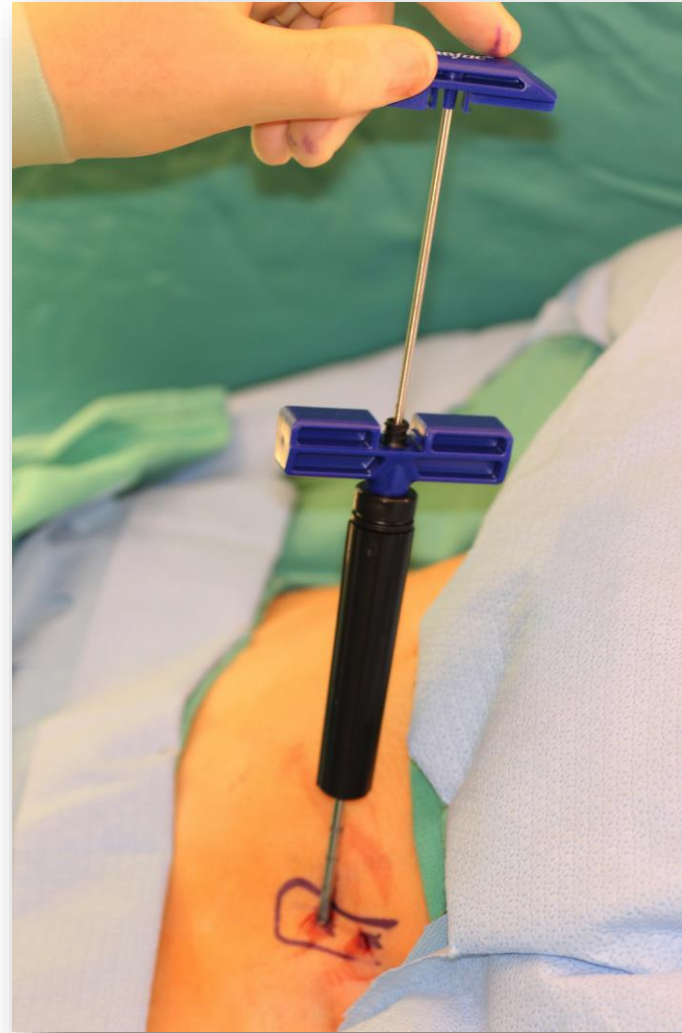
Trocar Insertion (I)

Introducer needle inserted just past cortex and into medullary space



Trocar Insertion (II)

Remove sharp stylet



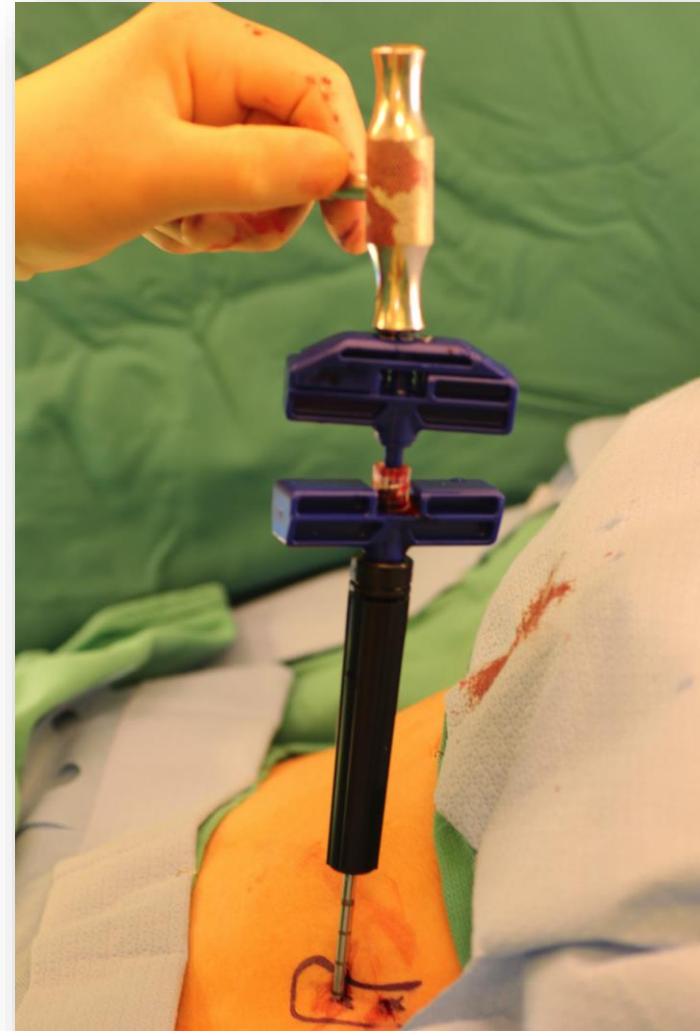
Trocar Insertion (III)

Test to make sure in red marrow by drawing 1mL through introducer needle



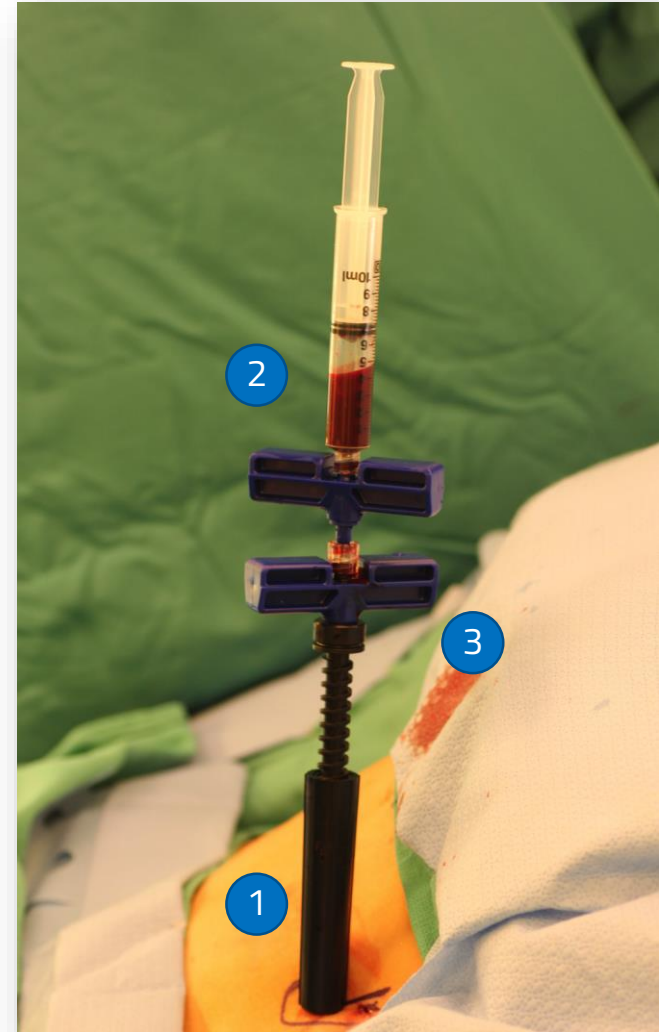
Trocar Insertion (IV)

Advance second aspiration cannula and connect via luer spin lock



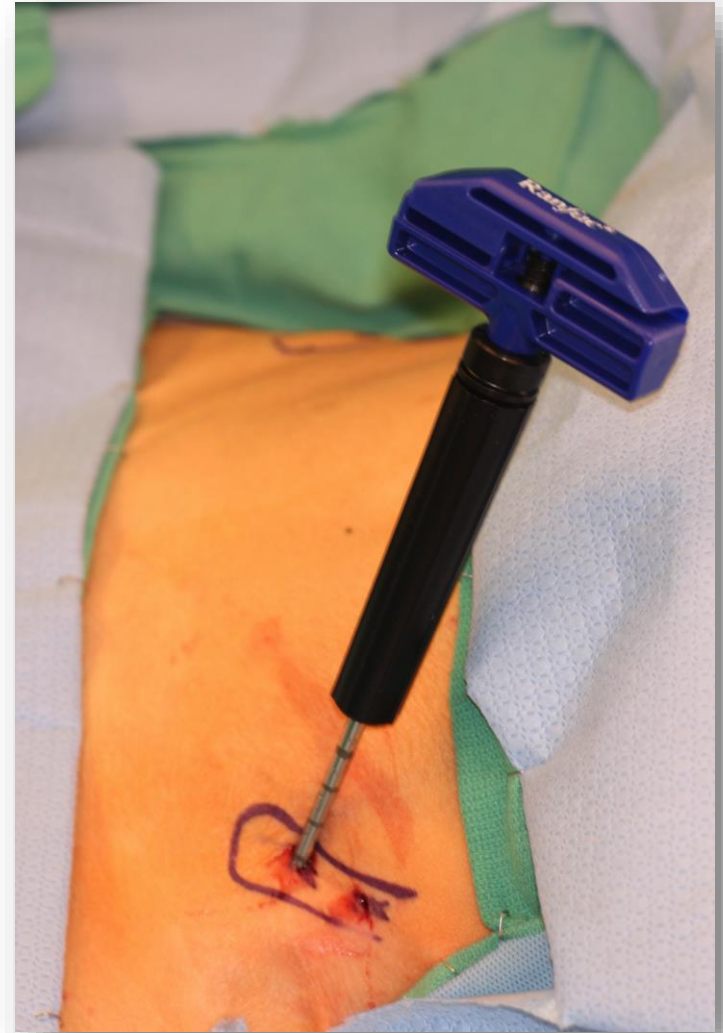
Marrow Collection

1. Screw black jacket flush with skin
2. Remove stylet from aspiration cannula and Attach syringe
3. Holding the black Jacket with one hand and the handle of lower introducer needle with the other hand:
 - a. turn handle 360 degrees counter clockwise,
 - b. draw 1mL,
 - c. repeat until needle is at the top of its trajectory.



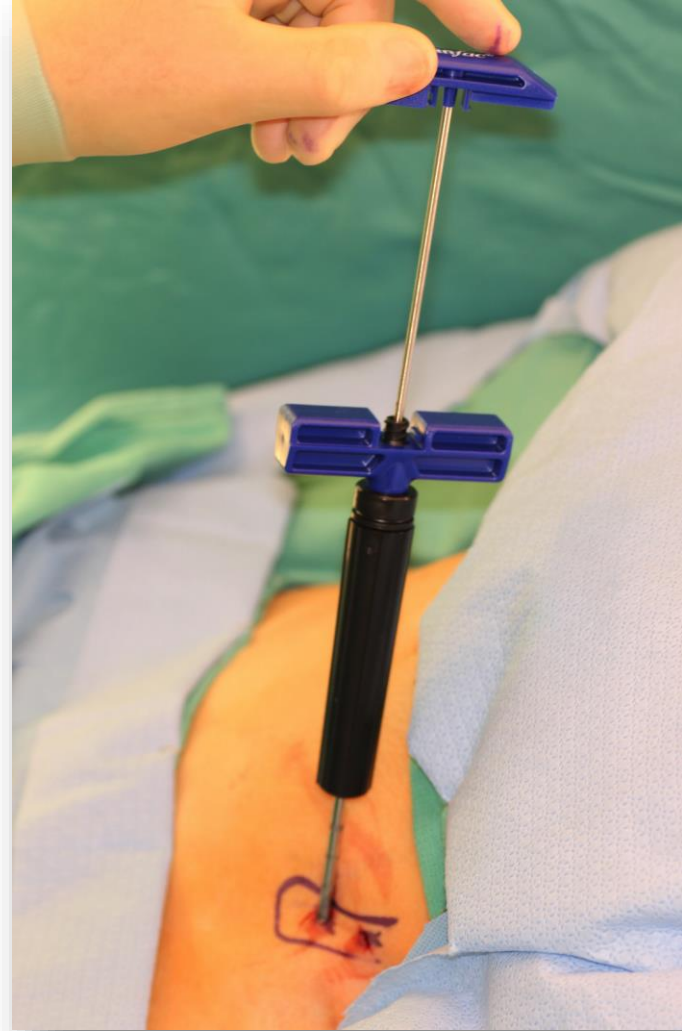
Graft Collection (I)

Reassemble Introducer needle and insert just past the cortex into the medullary space



Graft Collection (II)

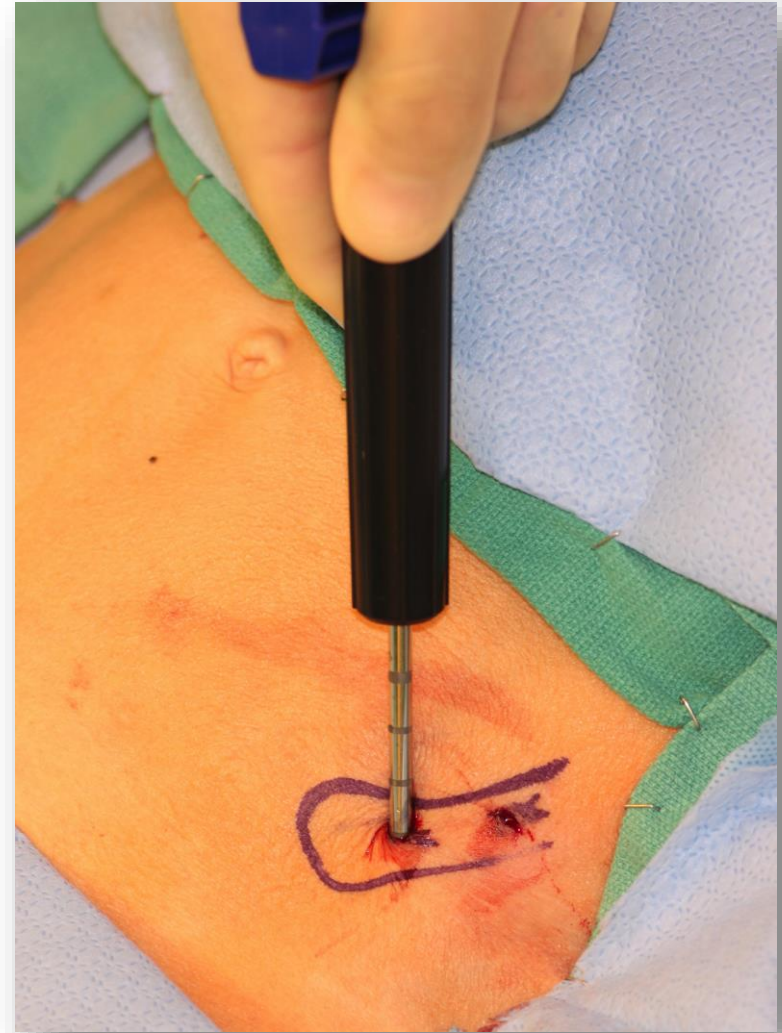
Remove sharp stylet



Graft Collection (III)

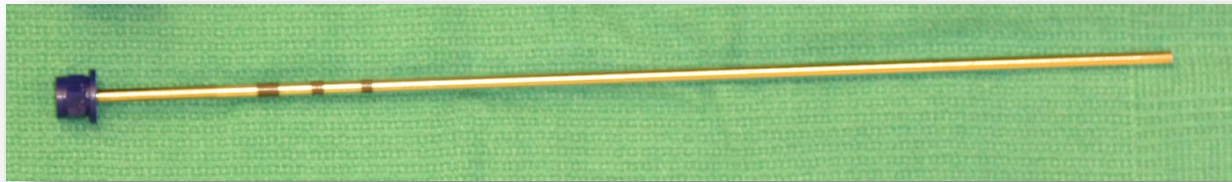
Using a twisting action, advance the hollow cannula into the medullary space.

The hollow cannula will fill with bone and swell inside the trephine tipped needle



Sounding Rod Insertion

Insert sounding rod, height of exposed black lines indicates height in centimeters of bone inside the needle cannula



Sounding Rod



Graft Collection Shovel

Once sufficient bone is captured inside the cannula, insert graft collection shovel snug to handle and twist the handle and shovel in tandem



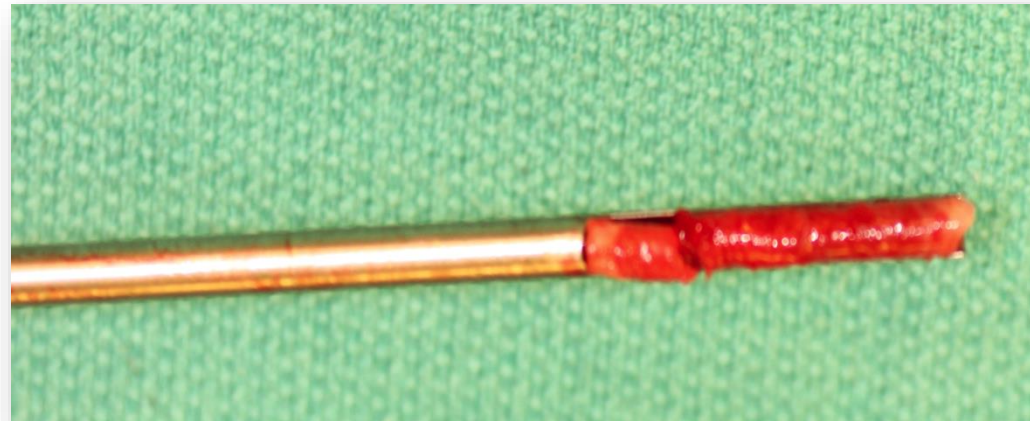
Graft Collection Shovel



Graft Collection Shovel Removal

Remove needle from bone space and lay it flat on table, remove shovel from needle, remove bone dowel from the shovel.

Repeat as needed to remove as many dowels as needed.



Graft Collection Shovel with bone dowel

Bone Graft Collection Dowels

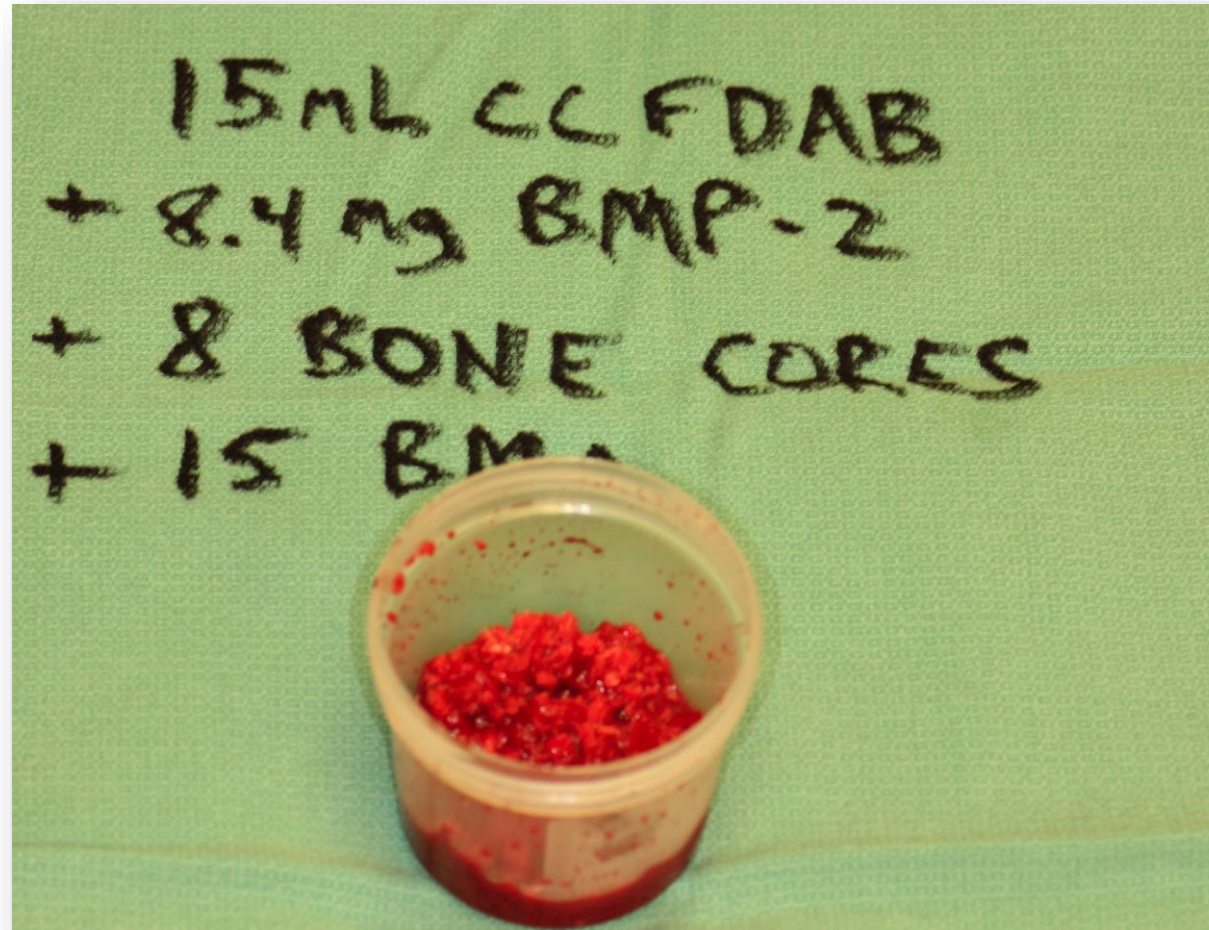


Bone Mill

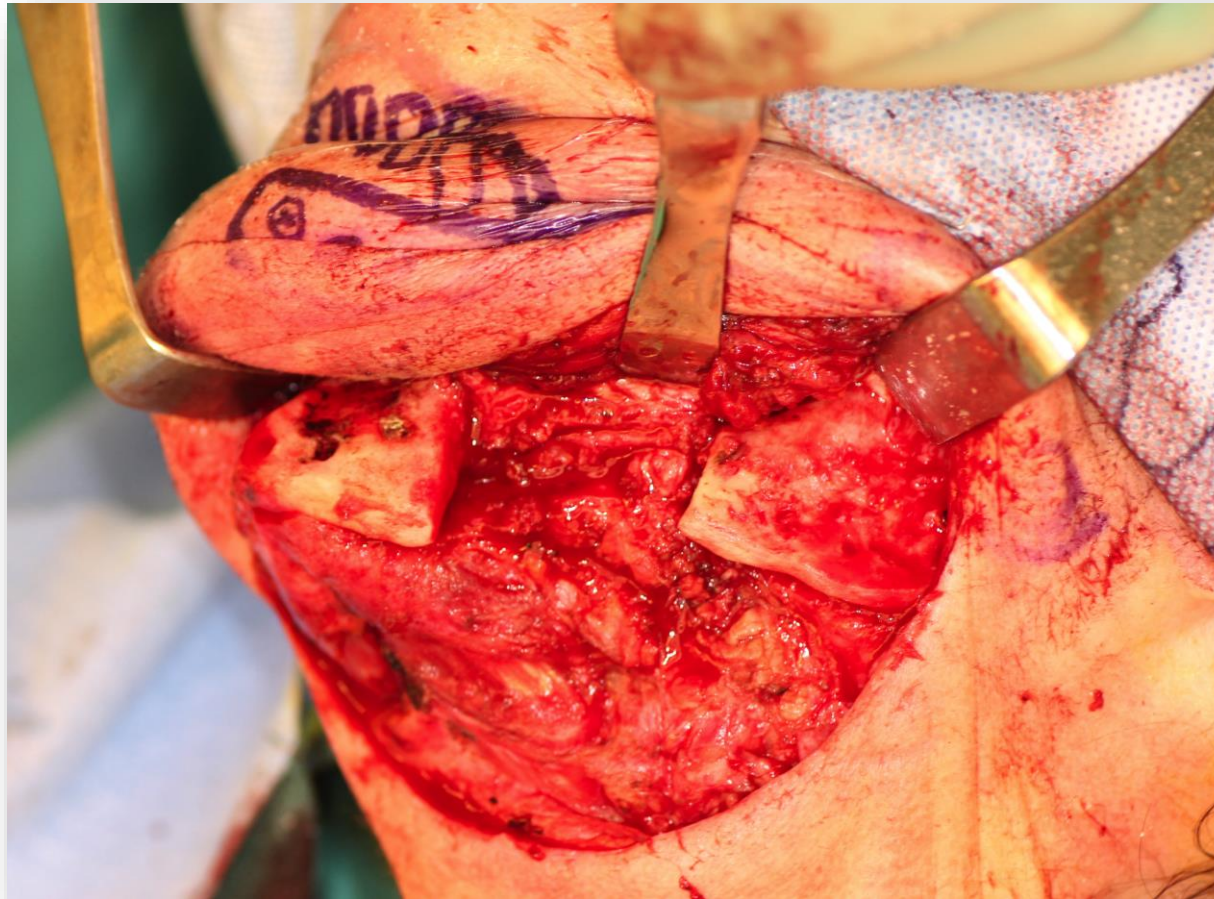
Bone mill to prepare cancellous graft extender



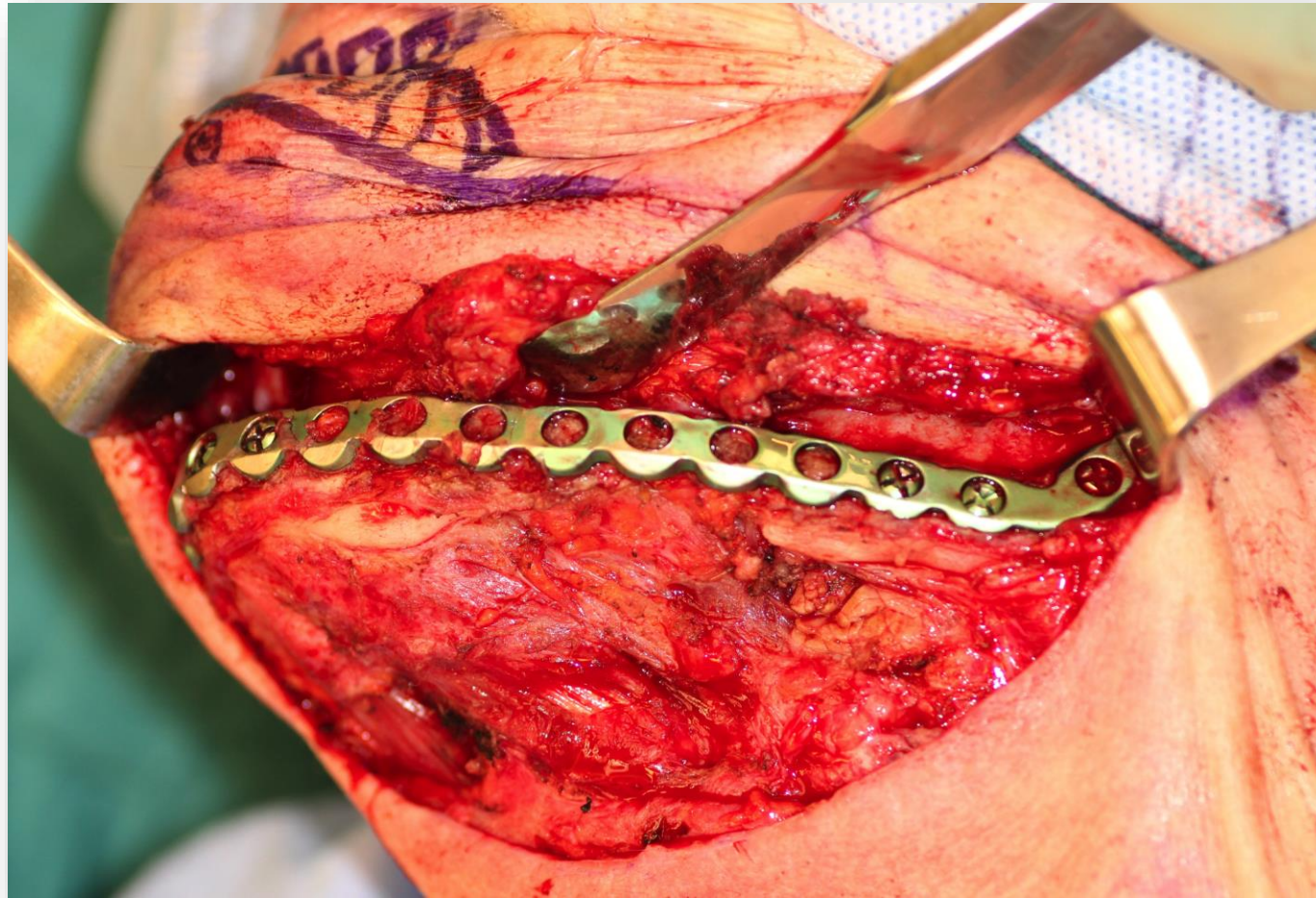
Milled Scaffold



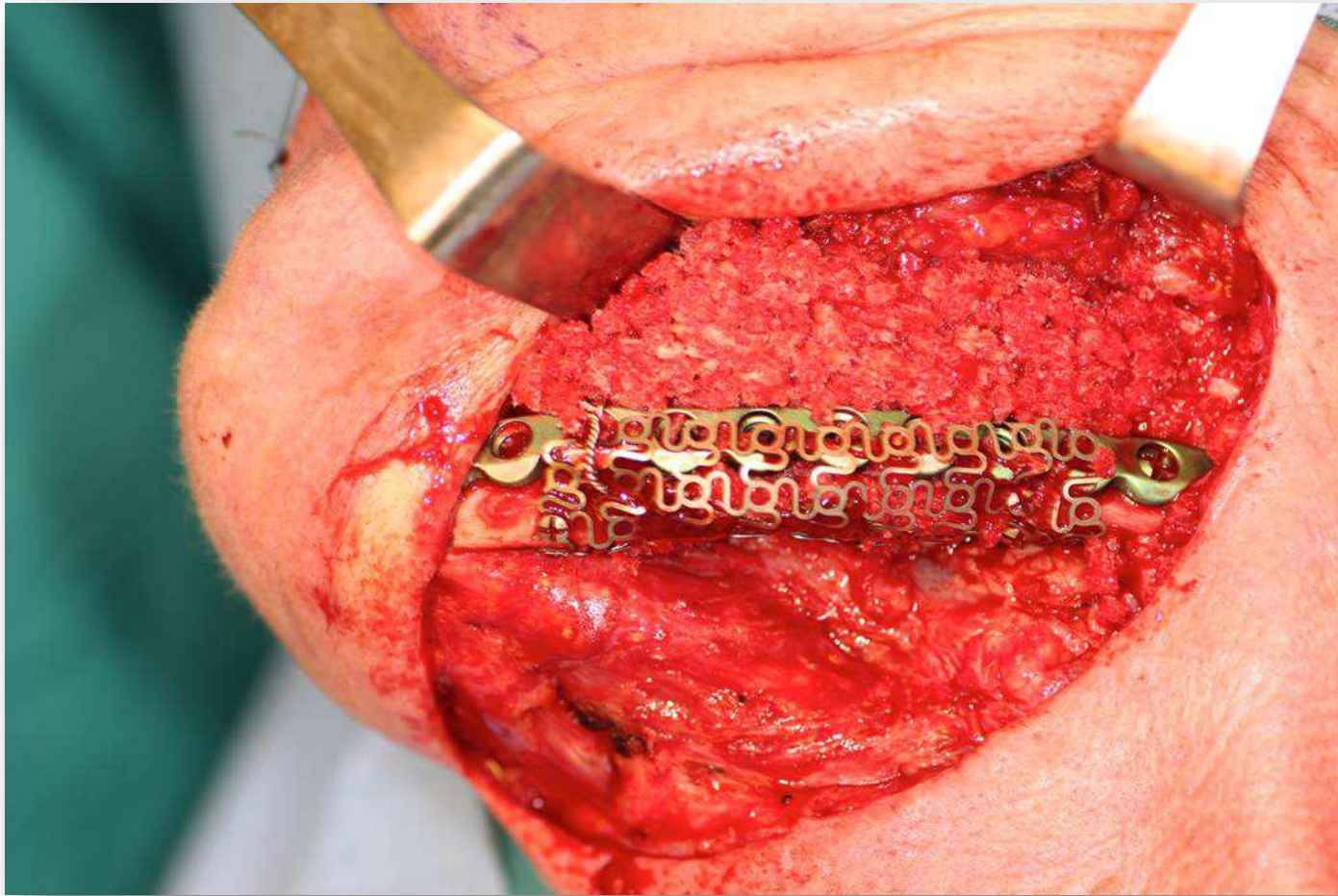
Defect Zone Excised



Defect Zone Packed and Plated



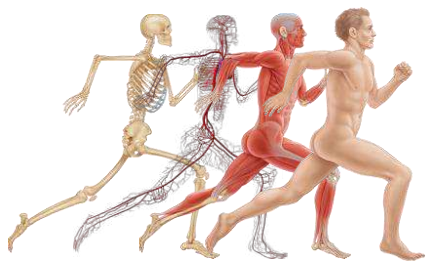
Defect Zone with Containment Screen



Surgical Site Closure & Drainage Catheter



Thank you



ASPIRE | MEDICAL
INNOVATION

Aspire Medical Innovation
Zehntfeldstraße 240a
D-81825 München
www.aspire-medical.eu

